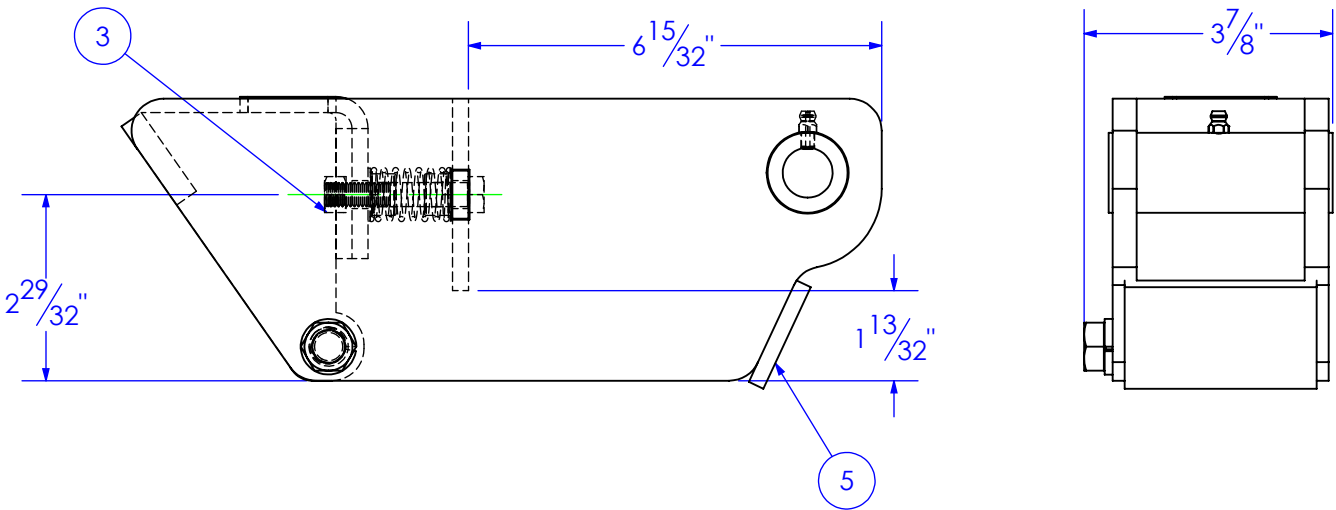
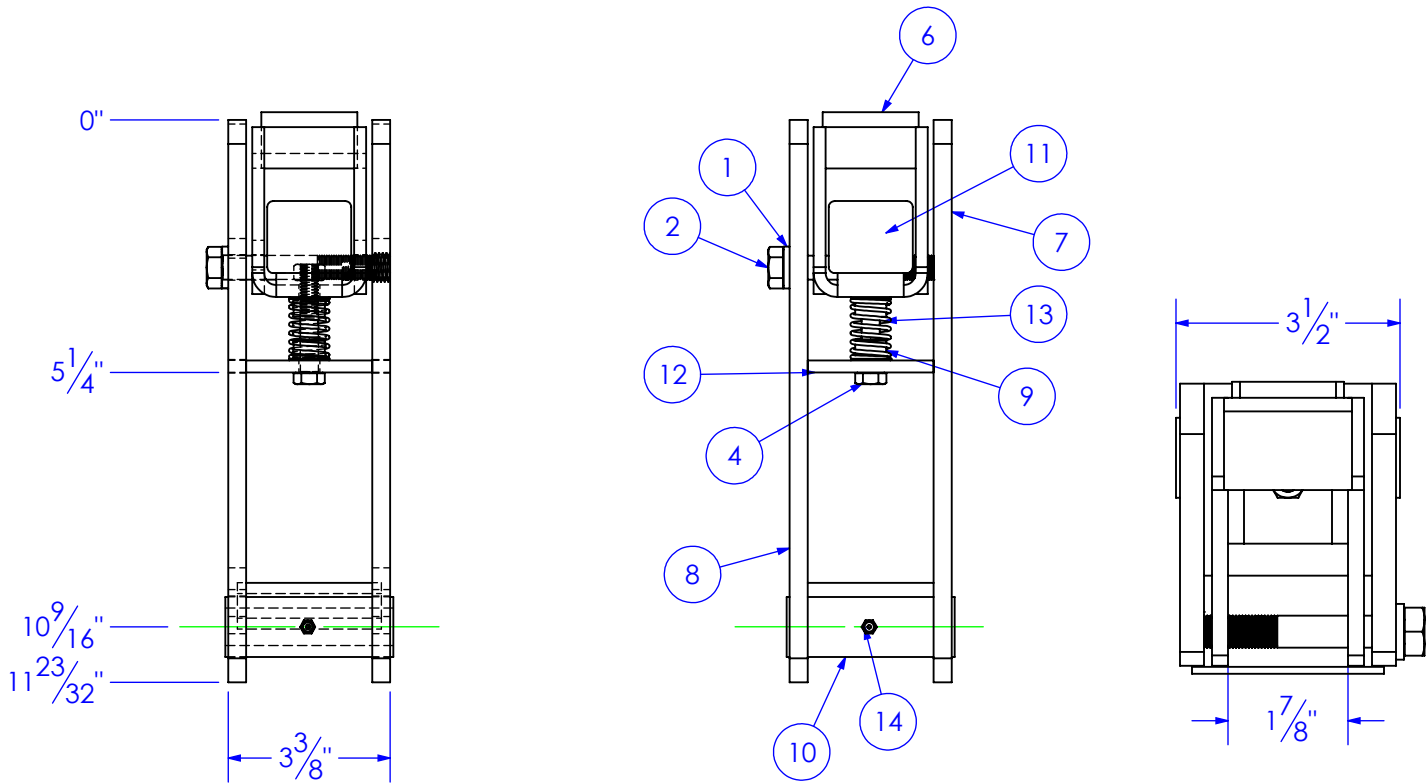
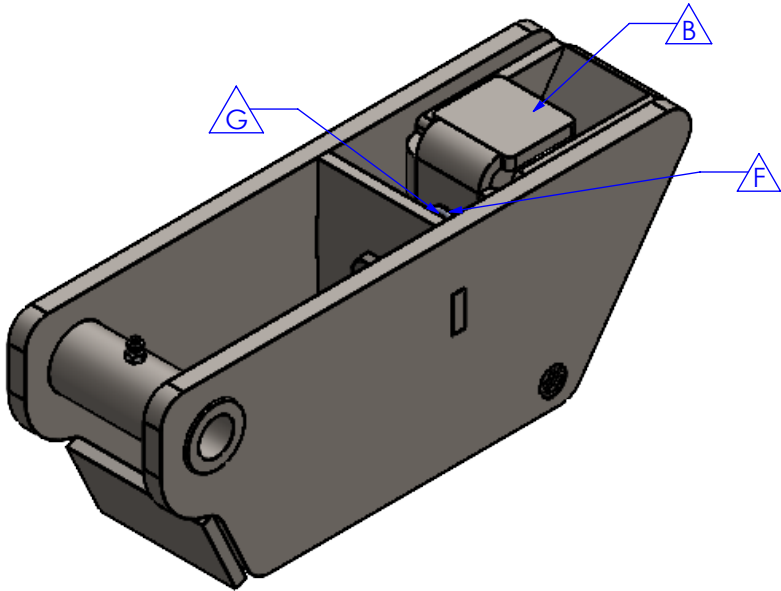


ITEM NO.	PART NUMBER	DESCRIPTION	MATERIAL	DRAWING	QTY.
1	BO-1/2 LW SS	1/2" LOCK WASHER, STAINLESS	STOCK	-	1
2	BO-1/2X3-1/2 HCS STAINLESS	BOLT, 1/2x3-1/2 STAINLESS	STOCK	-	1
3	BO-5/16 HNN SS	5/16 NYLOC NUT STAINLESS	STOCK	-	1
4	BO-5/16x2-3/4 HCS STAINLESS	BOLT, 5/16" x 2-3/4", STAINLESS	STOCK	-	1
5	FI .25 x 3 L 1.75	LENGTH: 1-3/4"	1/4" x 3"	STOCK	1
6	FI .375 X 1.5 L 2	LENGTH: 2"	3/8 x 1-1/2"	STOCK	1
7	FP-RL-ECKEPPER-IN	END CAP, INSIDE KEEPER, REEL LIFT	3/8" HRS	12-2430	1
8	FP-RL-ECKEPPER-OUT	END CAP, OUTSIDE KEEPER, REEL LIFT	3/8" HRS	12-2416	1
9	FP-RL-FLNG SPRSPCR	FLANGE SPRING SPACER, REEL LIFT	303 STAINLESS STEEL	12-2443	2
10	FP-RL-KB	BUSHING, KEEPER	MT .75X1.25	12-2423	1
11	FP-RL-LATCH	LATCH, REEL LIFT	1/4" HRS	12-2440	1
12	FP-RL-LATCHPLT	LATCH PLATE, REEL LIFT	1/4" HRS	12-2417	1
13	HD-SPR .845x.79x.08	0.845x2-1/2 COMP SPRING STAINLESS	STOCK	-	1
14	HD-ZG .25-28 90	GREASE ZERK 1/4-28 STRAIGHT	STOCK	-	1

REVISIONS			
REV.	DESCRIPTION	DATE	APPROVED
A	INITIAL RELEASE	2/20/2017	
B	REVISE LATCH ASSEMBLY	5/3/2017	
C	ADD ITEM 14	2/16/2018	
D	REVISE ITEMS 5, 11 & 13	6/19/2018	
E	CHANGE ITEM 9 & 14	7/8/2019	
F	CHANGED PART # HD-SP .645ODx.39IDxL.434 FOR FP-FLNG SPRSPCR	11/19/2022	HP
G	CHANGED PART # FP-FLNG SPRSPCR TO SP-RL FLNG SPRSPCR	11/26/2022	HP




DRAWING LOCATION:
M:\Drawings\Ethan\Solidworks drawings\12 REEL LIFT\1X00 FABRICATION DWG\1400 Rear Assembly
ASM. LOCATION:
M:\Drawings\Ethan\Solidworks drawings\SOLIDWORKS MODELS\FP-RL

PROPRIETARY AND CONFIDENTIAL
THE INFORMATION CONTAINED IN THIS
DRAWING IS THE SOLE PROPERTY OF TRIPLE
C INC. ANY REPRODUCTION IN PART OR
AS A WHOLE WITHOUT THE WRITTEN
PERMISSION OF TRIPLE C, INC IS PROHIBITED.

UNLESS OTHERWISE SPECIFIED:
DIMENSIONS ARE IN INCHES
TOLERANCES:
FRACTIONAL ± 1/16
ANGULAR: MACH ± 1 BEND ± 1
TWO PLACE DECIMAL ± 010
THREE PLACE DECIMAL ± 005
MATERIAL
DO NOT SCALE DRAWING

	NAME	DATE
DRAWN	ETHAN	11/26/2022
PART #	Part #	
ASM #	KEEPER_DS_LATCH	
COMMENTS:	END CAP KEEPER WELDMENT, DRIVER SIDE REEL LIFT	

P.O. BOX 248, SABETHA, KS 66534
(785) 284-3674 FAX (785) 284-3931



SIZE	DWG. NO.	REV
B	12-1404	G
SCALE: 1:4	WEIGHT: 12.713	SHEET 1 OF 1